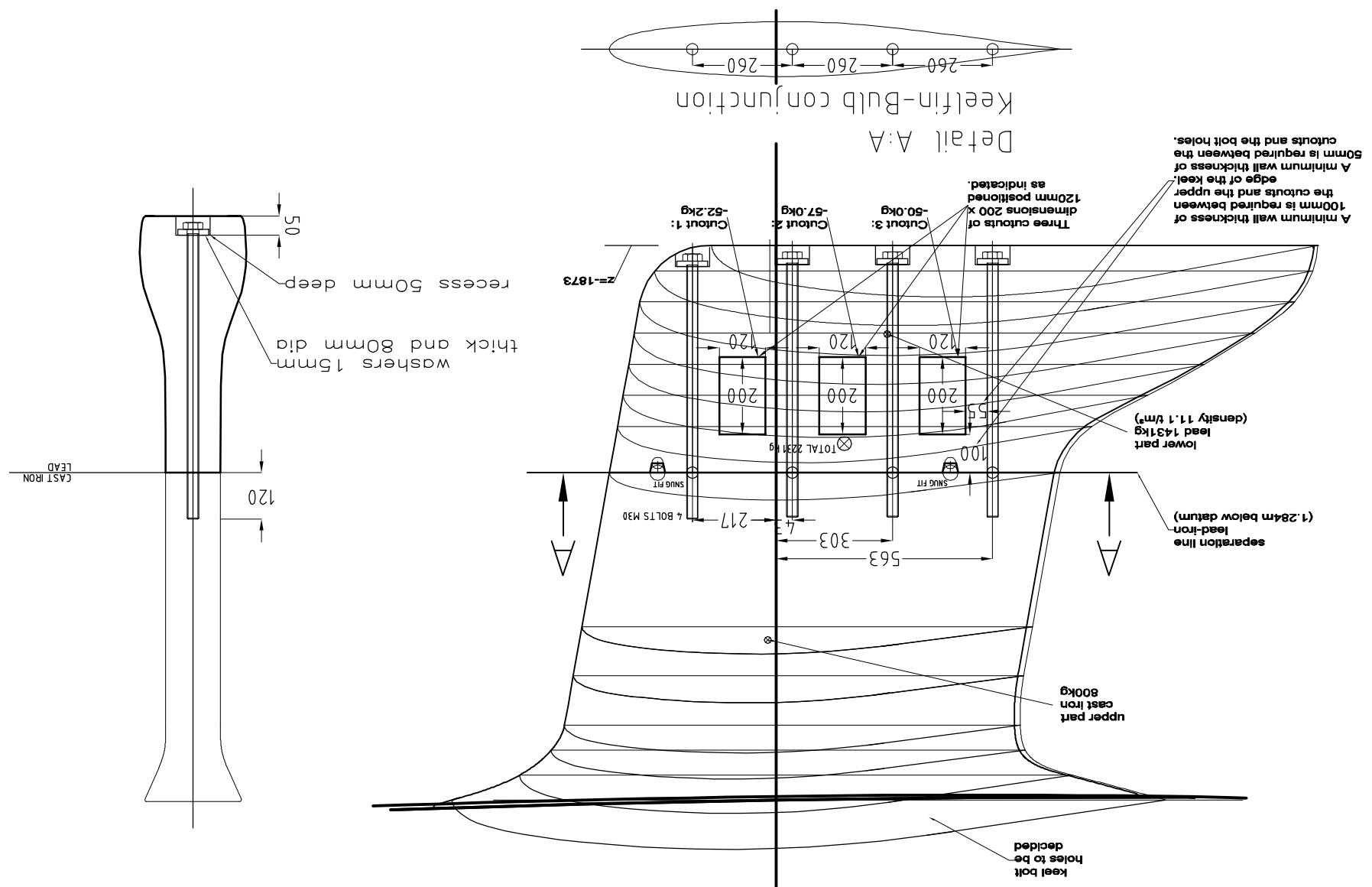


Judel/vrolijk & co - PROPRIETARY  
 THE INFORMATION CONTAINED HEREON IS STRICTLY CONFIDENTIAL AND IS SUBJECT TO A CONFIDENTIALITY AGREEMENT AND A PERSON USING OR DISCLOSURE THE INFORMATION CONTAINED HEREON IN BREACH OF SUCH AGREEMENT SHALL BE SUBJECT TO AN ACTION TO ENJOIN SUCH USE AND A SUIT FOR DAMAGES.  
 DUE TO BUILDING TOLERANCES ALL DIMENSIONS GIVEN ON THIS DRAWING ARE TO BE CHECKED ON THE BOAT!  
 ALL DIMENSIONS IN MM.

**Hanse 370**  
 construction keel - boat #001  
 HA37-keel-CKO-first  
 DRAWING NUMBER  
 1 : 15  
 SCALE  
 SHEET  
 1 OF 1  
 first issue  
 13-07-05  
 DATE  
 DRAWN BY  
 APPROVED  
 rk/ps  
 MODIFICATION  
 JUEL/VROLIJK & CO - engineering gmbh  
 AM SEEDICH 45  
 TELEFON +49(0)471 97 123 95  
 TELEFAX +49(0)471 97 123 96  
 D-27572 BREMERHAVEN  
 GERMANY  
 E-mail: info@judel-vrolijk.com



The geometrie of the keel fin  
 can be seen from the IGES-file  
 'HA370-keel fin.IGS'  
 KEEL T = 1873 mm  
 WEIGHT  
 FIN CAST IRON approx. 800 KG  
 BULB LEAD approx. 1431KG  
 MATERIALS  
 LEAD WITH 3% ANTIMON  
 BOLTS V4A TENSILE STRENGTH MIN 235 N/QMM  
 CAST IRON TENSILE STRENGTH MIN 80 N/mm<sup>2</sup>  
 NOTE: Keel taken from HA371  
 deep keel. The top surface must  
 be adapted to the new hull shape.  
 For geometric information refer  
 to HA36CCA5.dwg

NOTE: Keel bolts  
 not final!

X Position: 5000

DWL