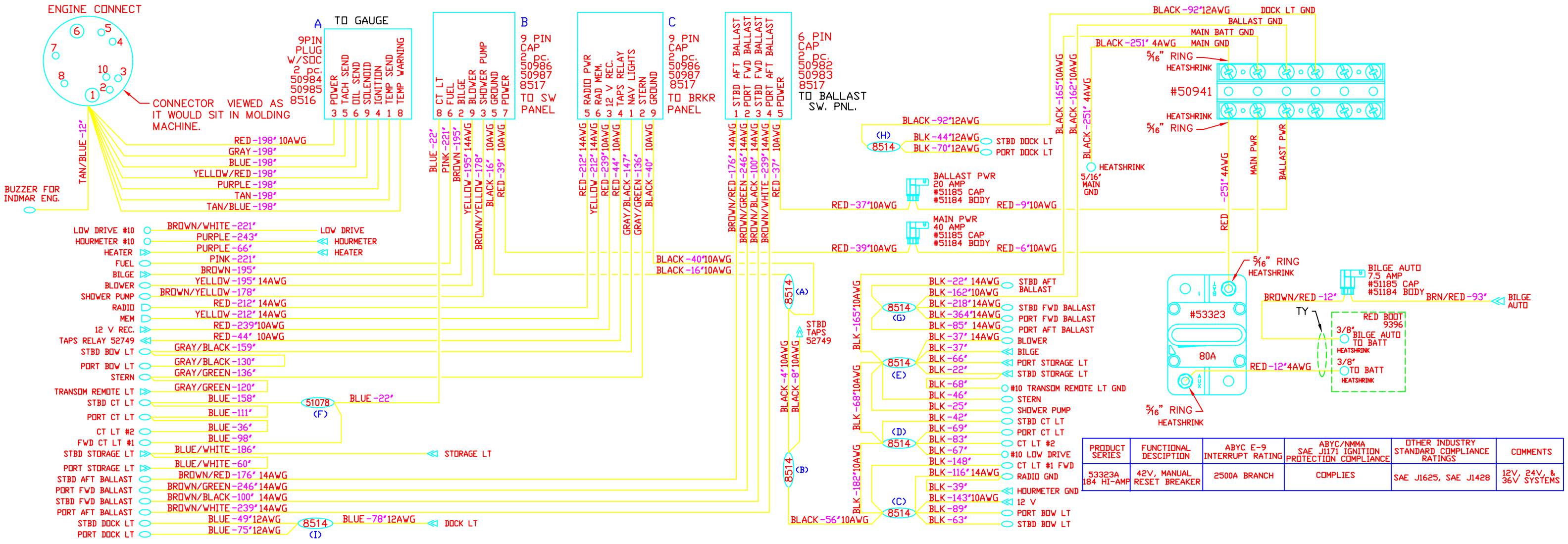


ENGINE CONNECT LEGEND	
PIN#	DESCRIPTION
1	-
2	TACH SNDR GRAY 16AWG 192"
3	TEMP SNDR TAN 16AWG 192"
4	TEMP WARNING TAN/BLUE 16AWG 204"
5	IGNITION PURPLE 16AWG 192"
6	BATTERY POS. RED 10AWG 192"
7	SOLENOID YELLOW/RED 16AWG 192"
8	OIL SNDR BLUE 16AWG 192"
10	BUZZER FOR INDMAR ENG. BLUE/TAN 12"

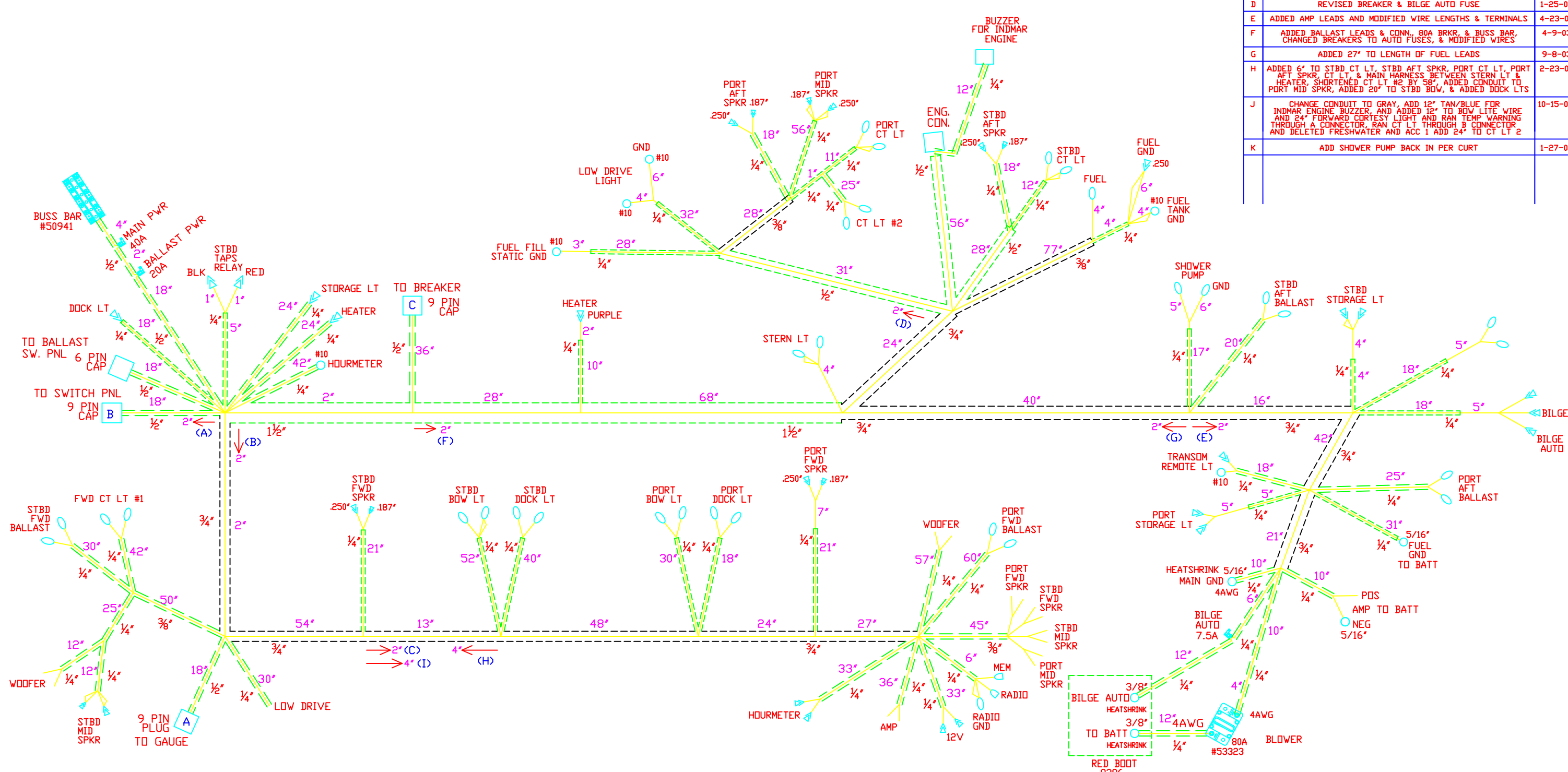
REVISIONS			
REV	DESCRIPTION	DATE	BY
B	ADD TRANSOM REMOTE LT & HOUR METER LEADS, DELETED GND FROM ENG HARN. TO PREVENT GND LOOP PER EDDY G. AT TIGE	8-7-01	RP
C	REVISED SPKR WIRES AND TERMINALS, REVISED 8 WAY TO 9 PIN PLUG PER RYAN, ADDED 12" TO PORT BOW LT	1-8-02	RP
D	REVISED BREAKER & BILGE AUTO FUSE	1-25-02	RP
E	ADDED AMP LEADS AND MODIFIED WIRE LENGTHS & TERMINALS	4-23-02	RKA
F	ADDED BALLAST LEADS & CONN, 80A BRKR. & BUSS BAR, CHANGED BREAKERS TO AUTO FUSES, & MODIFIED WIRES	4-9-03	RKA
G	ADDED 27" TO LENGTH OF FUEL LEADS	9-8-03	RKA
H	ADDED 6" TO STBD CT LT, STBD AFT SPKR, PORT CT LT, PORT AFT SPKR, CT LT, & MAIN HARNESS BETWEEN STERN LT & HEATER, SHORTENED CT LT #2 BY 58", ADDED CONDUIT TO PORT MID SPKR, ADDED 20" TO STBD BOW, & ADDED DOCK LTS	2-23-04	RKA
J	CHANGED CONDUIT TO GRAY, ADD 12" TAN/BLUE FOR INDMAR ENGINE BUZZER, ADDED 12" TO BOW LIGHT WIRE AND 24" FORWARD COURTESY LIGHT, RUN CT LT THROUGH B CONNECTOR AND DELETED FRESHWATER AND ACC 1, ADD 24" TO CT LT 2	10-15-04	JTK
K	ADD SHOWER PUMP BACK IN PER CURT	1-27-05	KMH



PRODUCT SERIES	FUNCTIONAL DESCRIPTION	ABYC E-9 INTERRUPT RATING	ABYC/NMMA SAE J1171 IGNITION PROTECTION COMPLIANCE	OTHER INDUSTRY STANDARD COMPLIANCE RATINGS	COMMENTS
53323A 184 HI-AMP	42V, MANUAL RESET BREAKER	2500A BRANCH	COMPLIES	SAE J1625, SAE J1428	12V, 24V, & 36V SYSTEMS

UNLESS OTHERWISE SPECIFIED DIMENSIONS ARE IN INCHES		PROJECT		UNIFORCE TECHNOLOGIES	
TOLERANCES ARE:	ANGLES	-		NORTH LITTLE ROCK, AR (501) 945-3283	
DECIMALS .XX ± .03	± 1°	TIGE		HARN, ACC	
XXX ± .010		-		20 V, N BOAT	
MATERIAL		APPROVALS	DATE		
-		RP	7-24-01		
FINISH		CHECKED		SIZE	FILE NAME
-		-		D	36550SH1
NEXT ASSY	USED ON	ENGINEER		DWG NO.	36550
-		-		REV	K
APPLICATION	DO NOT SCALE DRAWING	ISSUED	KMH	SCALE	NTS
			2-3-05		SHEET 1 OF 2

REVISIONS			
REV	DESCRIPTION	DATE	BY
B	ADD TRANSOM REMOTE LT & HOUR METER LEADS, DELETED GND FROM ENG HARN. TO PREVENT GND LOOP PER EDDY G. AT TIGE	8-7-01	RP
C	REVISED SPKR WIRES AND TERMINALS, REVISED 8 WAY TO 9 PIN PLUG PER RYAN, ADDED 12" TO PORT BOW LT	1-8-02	RP
D	REVISED BREAKER & BILGE AUTO FUSE	1-25-02	RP
E	ADDED AMP LEADS AND MODIFIED WIRE LENGTHS & TERMINALS	4-23-02	RKA
F	ADDED BALLAST LEADS & CONN, 80A BRKR, & BUSS BAR, CHANGED BREAKERS TO AUTO FUSES, & MODIFIED WIRES	4-9-03	RKA
G	ADDED 27" TO LENGTH OF FUEL LEADS	9-8-03	RKA
H	ADDED 6" TO STBD CT LT, STBD AFT SPKR, PORT CT LT, PORT AFT SPKR, CT LT, & MAIN HARNESS BETWEEN STERN LT & HEATER, SHORTENED CT LT #2 BY 58", ADDED CONDUIT TO PORT MID SPKR, ADDED 20" TO STBD BOW, & ADDED DOCK LTS	2-23-04	RKA
J	CHANGE CONDUIT TO GRAY, ADD 12" TAN/BLUE FOR INDMAR ENGINE BUZZER, AND ADDED 12" TO BOW LITE WIRE AND 24" FORWARD CORTESY LIGHT AND RAN TEMP WARNING THROUGH A CONNECTOR, RAN CT LT THROUGH B CONNECTOR AND DELETED FRESHWATER AND ACC 1 ADD 24" TO CT LT 2	10-15-04	JTK
K	ADD SHOWER PUMP BACK IN PER CURT	1-27-05	KMH



LABEL ALL CONNECTORS W/MARKER

CONDUIT FLAME RETARDANT

SPOT TAPE

NOTE: PUT TAN TAPE #52135 WHERE GND SPLICES ARE

UNLESS OTHERWISE SPECIFIED DIMENSIONS ARE IN INCHES		PROJECT		UNIFORCE TECHNOLOGIES	
TOLERANCES ARE:	ANGLES	TIGE		NORTH LITTLE ROCK, AR (501) 945-3283	
DECIMALS ± .03	± 1°	APPROVALS	DATE	HARN, ACC	
XX ± .03		DRAWN RP	7-24-01	20 V, N BOAT	
XXX ± .010		CHECKED -		SIZE D	FILE NAME 36550SH2
		ENGINEER -		DWG NO.	36550
		ISSUED KMH	2-3-05	SCALE NTS	REV K
APPLICATION	DO NOT SCALE DRAWING				SHEET 2 OF 2